



# St. Michael's

Church of England Primary Academy

## Attainment Data

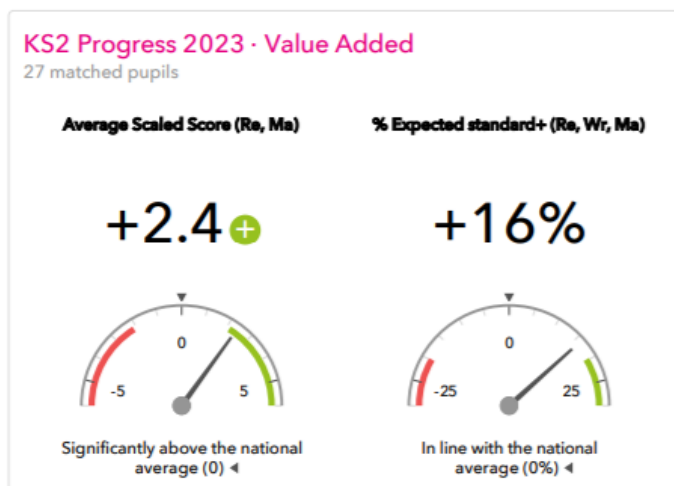
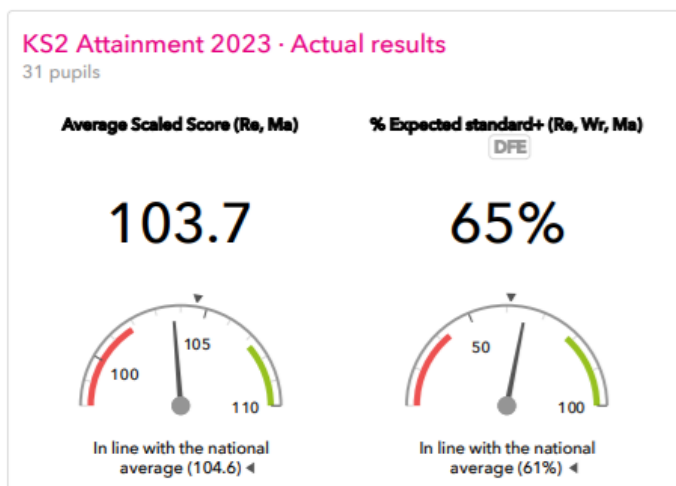
2022/2023

### Whole School Data Overview for 2023

### Key Stage 2: Year 6 End of Year Results

	National Average 2022	St. Michael's 2022	National Average 2023	St. Michael's 2023
Reading - Expected Standard	75%	76%	73%	68%
Reading - Greater Depth	28%	28%		26%
Writing - Expected Standard	69%	72%	71%	74%
Writing - Greater Depth	13%	16%		6%
Maths - Expected Standard	71%	72%	73%	81%
Maths - Greater Depth	22%	36%		36%
GPS - Expected Standard	72%	84%	72%	90%
GPS - Greater Depth	28%	60%		42%
Reading, Writing & Maths Combined - Expected Standard	59%	68%	59%	65%
Reading, Writing & Maths Combined – Greater Depth	7%	8%		6%

### Key Stage 2 Value Added



## Key Stage 2 Scaled Scores

	National Average 2022	St. Michael's 2022	National Average 2023	St. Michael's 2023
Reading	105	104	105	104
Maths	104	102	104	104
GPS	105	110	105	108

### KS2 Attainment 2023

31 pupils

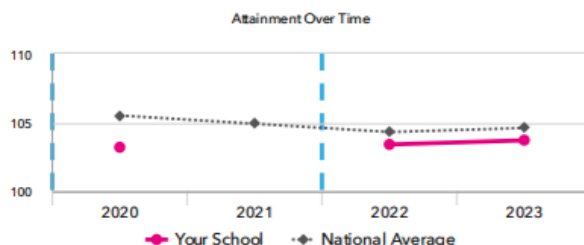
Average Scaled Score (Re, Ma)

# 103.7

FFT Rank

100 BETTER ► 1

In line with the national average (104.6)



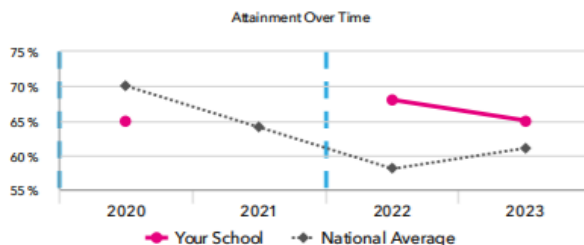
% Expected standard+ (Re, Wr, Ma) DFE

# 65%

FFT Rank

100 BETTER ► 1

In line with the national average (61%)



### KS2 Progress 2023

27 matched pupils

Average Scaled Score (Re, Ma)

# +2.4+

FFT Rank

100 BETTER ► 1

Significantly above the national average (0)

% Expected standard+ (Re, Wr, Ma)

# +16%

FFT Rank

100 BETTER ► 1

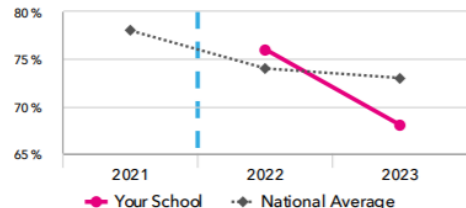
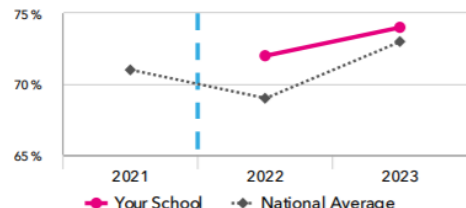
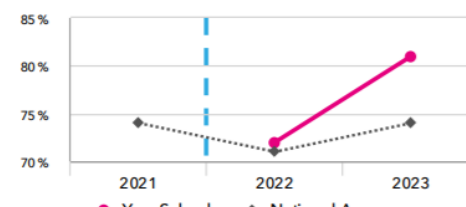
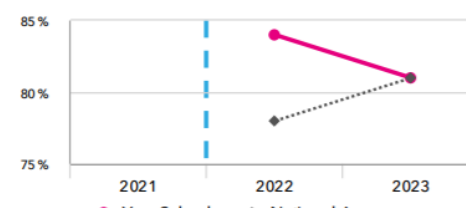
In line with the national average (0%)

## Key Stage 2 Attainment: 2023 and 2022

### KS2 performance summary

	Actual results			Pupil progress		
	2021	2022	2023	2021	2022	2023
Number of Pupils / % Matched	-	25	31	-	80%	87%
% Expected standard+ (Re, Wr, Ma)	-	68%	65%	-	+16%	+16%
% Higher standard (Re, Wr, Ma)	-	8%	6%	-	+2%	+3%
Average Scaled Score (Re, GPS, Ma)	-	104.7	104.8	-	+2.7+	+3.3+
Average Scaled Score (Re, Ma)	-	103.4	103.7	-	+1.3	+2.4+
% Expected standard+ Reading	-	76%	68%	-	+7%	+5%
% Higher standard Reading	-	28%	26%	-	+2%	+11%
Scaled Score Reading	-	104.4	103.7	-	+1.7	+2.5
% Expected standard+ Writing	-	72%	74%	-	+11%	+11%
% Higher standard Writing	-	16%	6%	-	+6%	+0%
Scaled Score Writing	-	99.3	100.0	-	+1.6	+3.1+
% Expected standard+ Maths	-	72%	81%	-	+10%	+15%
% Higher standard Maths	-	36%	13%	-	+16%	-0%
Scaled Score Maths	-	102.3	103.7	-	+0.9	+2.2
% Expected standard+ Grammar, Punctuation & Spelling	-	84%	90%+	-	+14%	+29%+
% Higher standard Grammar, Punctuation & Spelling	-	60%+	42%	-	+40%+	+22%+
Scaled Score Grammar, Punctuation & Spelling	-	109.9+	107.9	-	+7.1+	+6.3+
% Expected standard+ Science	-	84%	81%	-	-	-

## Key Stage 2 Subject Performance 2023

	Actual results			Pupil progress			Actual results over time		
	2021	2022	2023	2021	2022	2023			
Number of Pupils / % Matched	-	25	31	-	80%	87%			
<b>Reading</b>									
% Expected standard+	-	76%	68%	-	+7%	+5%	<b>% Expected standard+ Reading</b>		
% Higher standard	-	28%	26%	-	+2%	+11%			
Scaled Score	-	104	104	-	+1.7	+2.5			
<b>Writing</b>									
% Expected standard+	-	72%	74%	-	+11%	+11%	<b>% Expected standard+ Writing</b>		
% Higher standard	-	16%	6%	-	+6%	+0%			
Scaled Score	-	99	100	-	+1.6	+3.1 +			
<b>Maths</b>									
% Expected standard+	-	72%	81%	-	+10%	+15%	<b>% Expected standard+ Maths</b>		
% Higher standard	-	36%	13%	-	+16%	-0%			
Scaled Score	-	102	104	-	+0.9	+2.2			
<b>Grammar, Punctuation &amp; Spelling</b>									
% Expected standard+	-	84%	90% +	-	+14%	+29% +	<b>% Expected standard+ Grammar, Punctuation &amp; Spelling</b>		
% Higher standard	-	60% +	42%	-	+40% +	+22% +			
Scaled Score	-	110 +	108	-	+7.1 +	+6.3 +			
<b>Science</b>									
% Expected standard+	-	84%	81%	-	-	-	<b>% Expected standard+ Science</b>		
									

## Key Stage 1: Year 2 End of Key Stage 1 Results

	National Average 2022	St. Michael's 2022	National Average 2023	St. Michael's 2023
Reading - Expected Standard	67%	61%	68%	68%
Writing - Expected Standard	58%	61%	60%	61%
Maths - Expected Standard	68%	56%	70%	68%
Reading, Writing & Maths Combined - Expected Standard	54%	56%	56%	58%

### KS1 Attainment 2023 - Actual results

31 pupils

% Expected Standard + (Re, Wr, Ma)

58%



In line with the national average (57%) ◀

% Higher Standard (Re, Wr, Ma)

0%



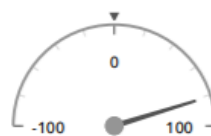
In line with the national average (6%) ◀

### KS1 Progress 2023 - Value Added

1 matched pupil

% Expected Standard + (Re, Wr, Ma)

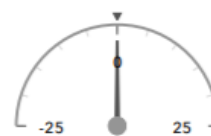
+81%



In line with the national average (0%) ◀

% Higher Standard (Re, Wr, Ma)

-0%



In line with the national average (0%) ◀

## Key Stage 1: Attainment and Progress

### KS1 Attainment 2023

31 pupils

% Expected Standard + (Re, Wr, Ma)

58%

FFT Rank

100 BETTER ► 1

In line with the national average (57%)

% Higher Standard (Re, Wr, Ma)

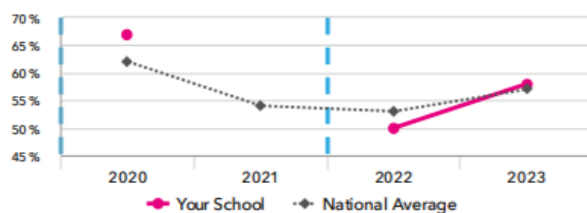
0%

FFT Rank

100 BETTER ► 1

In line with the national average (6%)

Attainment Over Time



### KS1 Progress 2023

1 matched pupil

% Expected Standard + (Re, Wr, Ma)

+81%

FFT Rank

100 BETTER ► 1

In line with the national average (0%)

% Higher Standard (Re, Wr, Ma)

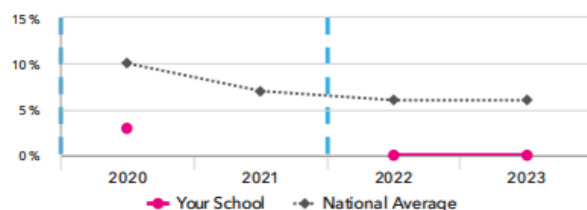
-0%

FFT Rank

100 BETTER ► 1


In line with the national average (0%)

Attainment Over Time



## Key Stage 1 Attainment: 2023 and 2022

### KS1 performance summary

	Actual results			Pupil progress		
	2021	2022	2023	2021	2022	2023
Number of Pupils / % Matched	-	18	31	-	67%	3%
% Expected Standard + (Re, Wr, Ma)	-	50%	58%	-	+0%	+81%
% Higher Standard (Re, Wr, Ma)	-	0%	0%	-	-9%	-0%
% Expected Standard + Reading	-	61%	68%	-	-12%	+67%
% Higher Standard Reading	-	6%	10%	-	-15%	-1%
% Expected Standard + Writing	-	61%	65%	-	-3%	+78%
% Higher Standard Writing	-	6%	0%	-	-3%	-0%
% Expected Standard + Maths	-	56%	68%	-	-4%	+56%
% Higher Standard Maths	-	17%	0% 	-	-3%	-3%

### Early Years

GLD 2022 - National Average	GLD 2022 – St. Michael's	GLD 2023 - National Average	GLD 2023 – St. Michael's
65%	68%	67%*	63%

*\*estimate; confirmed national average still to be published*

### Year 1 - Phonics

Year 1 Phonics Screening Test - National Average 2022	Year 1 Phonics Screening Test - St. Michael's 2022 Result	Year 1 Phonics Screening Test - National Average 2023	Year 1 Phonics Screening Test - St. Michael's 2023 Result
76%	71%	79%	76%

### Year 4 Multiplication Timetable Check

	National Average 2022	St. Michael's 2022	National Average 2023	St. Michael's 2023
Average Score	20 out of 25		20 out of 25*	23 out of 25
A score of 20/25 or more		33%		79%
A score of 25/25	27%	0%	31%	72%